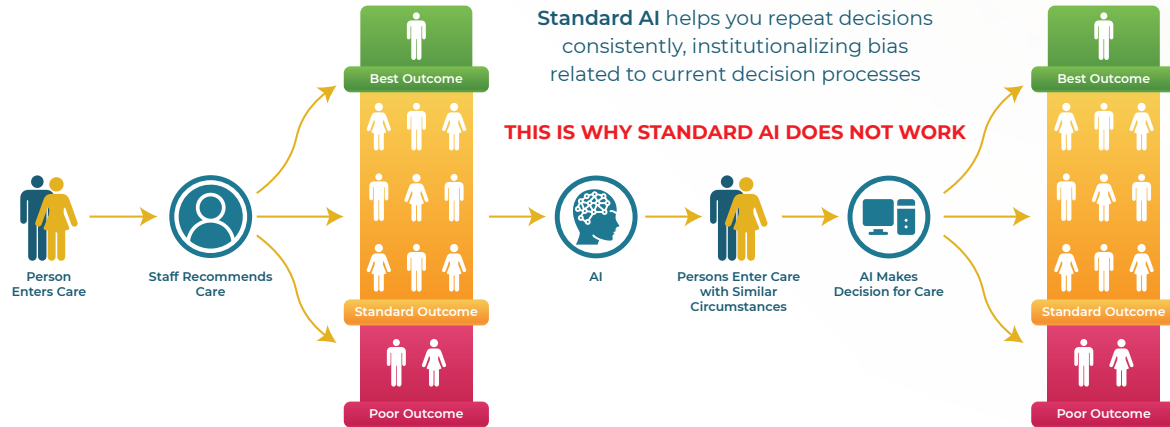


SUCCESS-FOCUSED

ARTIFICIAL INTELLIGENCE

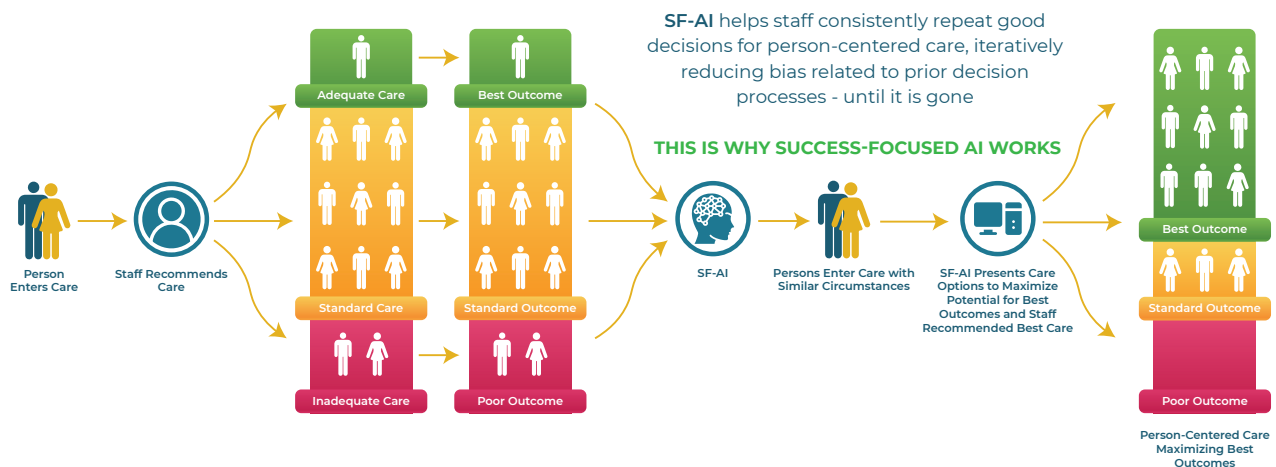
Using **revolutionary Success-Focused Artificial Intelligence (SF-AI)**, P-CIS provides interpretable results designed to help care workers use their own expertise and knowledge, supplemented by their history of success, to make the best and most appropriate decisions for care. Railing against institutional bias, P-CIS returns examples of successful outcomes on which to base future successful decisions.

ARTIFICIAL INTELLIGENCE (AI) LEARNS & MODELS HOW YOU MAKE DECISIONS



Traditional Standard AI bases future predictions on past decisions, institutionalizing poor decisions. In contrast, **SF-AI provides users with information on all of the options which have resulted in successful outcomes** for people with similar circumstances, helping care providers to make decisions which are more likely to result in success again and again. Rather than regressing to the mean, P-CIS helps providers **regress to the best**.

SUCCESS-FOCUSED ARTIFICIAL INTELLIGENCE (SF-AI) LEARNS AND MODELS HOW YOU MAKE GOOD DECISIONS



Somewhere, at some time, a person with those circumstances avoided falling through the cracks. P-CIS capitalizes on the examples of success to identify how we can do better. Over time, as SF-AI continues to support good decision after good decision, considering the full combination of circumstances that a person faces. By regressing an organization towards decisions for optimal well-being, **P-CIS promises to help identify and reduce institutionalized bias.**